



# intAct GEL-Power

Sealed GEL battery with grid plates | electrolyte gel-bonded | filled and charged | absolutely maintenance-free

Art.No.

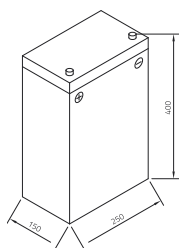
**GEL-69**

Usage

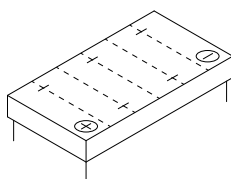
intAct GEL-Power

Volt	12V
Capacity	69 AH (c5), 78 AH (c10), 86 AH (c20)
CCR -18°C (EN)	-
Electrolyte	diluted sulphuric acid
Electrolyte density	1,28 +/- 0,01 Kg/l (25° C)
Size (LxWxH)	250 x 150 x 400 mm
Weight	31,5 kg
Pos. of Terminal	1
Terminal	F-M8
Base plate	-

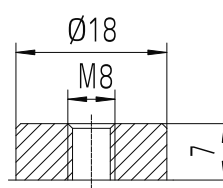
Size



Pos. of Terminal 1



Terminal F-M8



Base plate -

As of 09.11.2024