



intAct GEL-Power

Sealed GEL battery with grid plates | electrolyte gel-bonded | filled and charged | absolutely maintenance-free

Art.No.

GEL-14

Volt	12V
Capacity	12 AH (c5), 14 AH (c20), 16 AH (c100)
CCR -18°C (EN)	-
Electrolyte	diluted sulphuric acid
Electrolyte density	1,28 +/- 0,01 Kg/l (25° C)
Size (LxWxH)	150 x 87 x 145 mm
Weight	5 kg
Pos. of Terminal	1
Terminal	F-M5
Base plate	-

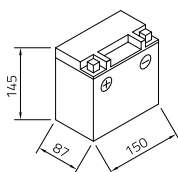
Usage

Strong and maintenance-free

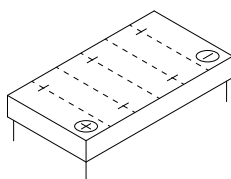
Perfect for professional storage and supply needs associated with renewable energy systems, coaches, campers or boats. Withstands charging-current fluctuations, relative deep discharges and continuous recharging. Our recommendation for anyone looking for a more cycle-resistant, spill-proof supply battery.

- » For medium to heavy cyclic use. 400 - 700 cycles according to IEC 254-1.
- » Longer service life than flooded lead-acid battery.
- » High vibration resistance.
- » Low self-discharge.
- » In 4-volt, 6-volt and 12-volt versions.
- » Sealed GEL battery with grid plates.
- » VRLA battery with gas recombination and safety valves, where refilling is neither possible or necessary.

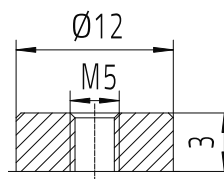
Size



Pos. of Terminal 1



Terminal F-M5



Base plate -

As of 05.12.2024